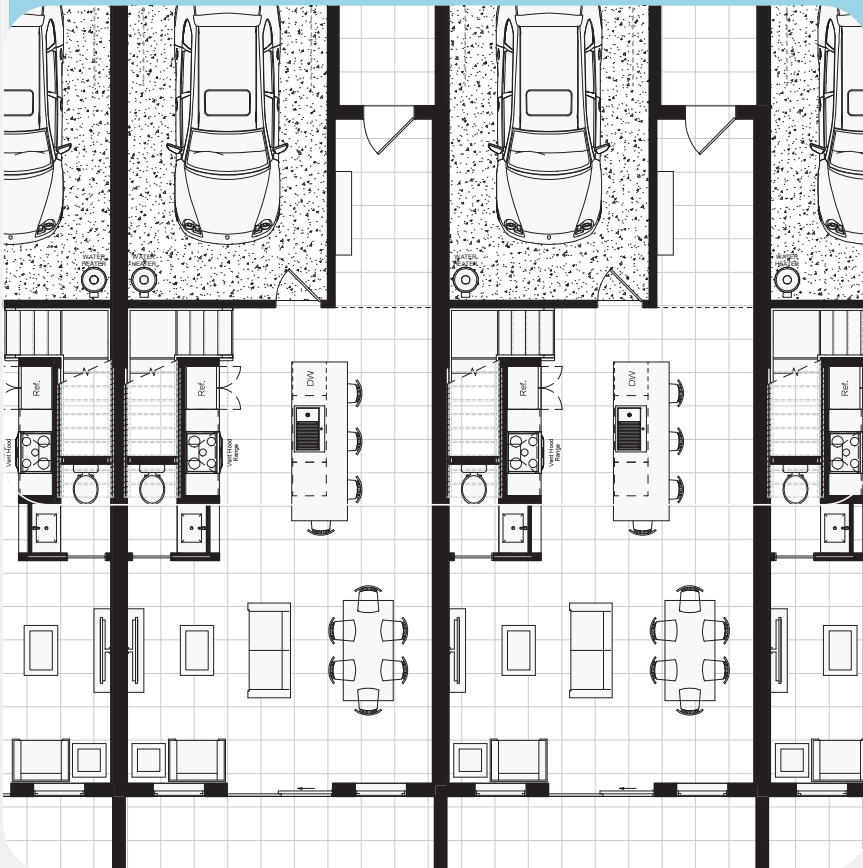


Traditional Style

LOCATION: PORT COLUMBUS DR, TAMPA, FL | CLIENT: THE PORT HOMES

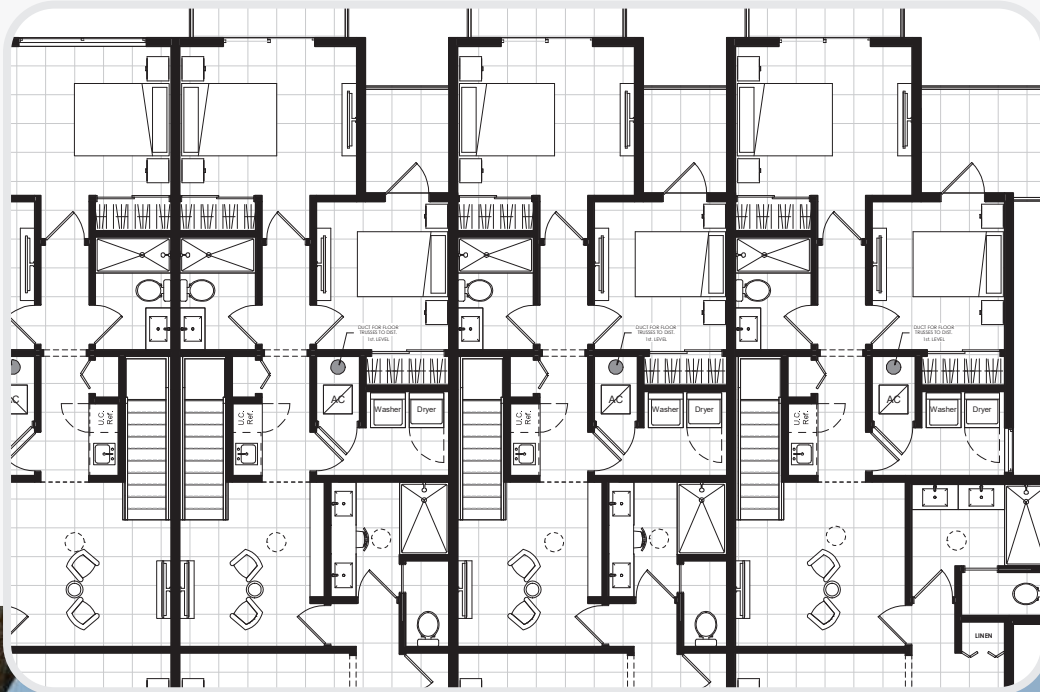


Functionality and livability

This project presents a series of townhomes designed in a Traditional style, drawing inspiration from classic architectural precedents. The design emphasizes a timeless aesthetic with a focus on functionality and livability. Key features include low-pitched gable roofs with exposed rafters, wide porches supported by square columns, and a balanced use of natural materials such as wood siding and stone accents.

SUSTAINABLE LIVING SPACES THAT BLEND
SEAMLESSLY INTO THE SURROUNDING ENVIRONMENT

Homes that are both aesthetically pleasing and enduring



This traditional style approach...

carefully considers the surrounding context, creating a cohesive streetscape with a sense of community. The use of consistent architectural elements, such as matching rooflines and porch designs, contributes to a harmonious and visually appealing neighborhood. Each townhome is thoughtfully planned to maximize natural light and ventilation, creating comfortable and inviting living spaces.

The emphasis on timeless design elements ensures that these townhomes will remain attractive and relevant for generations to come. The project demonstrates a commitment to creating high-quality, sustainable living spaces

